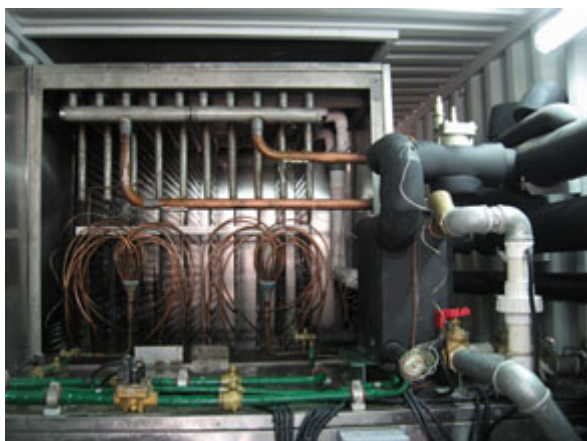


## Plate Ice Machine LIP-240C

[Home](#) > [Products](#) > [Plate Ice Machine](#)> Containerized Type



- Evaporator is made by advanced laser welding processing technology, solid and durable;
- Speedy ice doffing process. No extra heat needed, by using hot freon gas itself produced it melts the ice to fall. The whole process only takes 120 seconds;
- Unique water circulating system. After ice is doffed, the un-frozen water collected in the low water tank will be recycled to make ice. It is energy sufficient design but increase the ice production;
- SUS304 or aluminum alloy evaporator plates complies to hygiene requirement;
- Pre-fabricated system, no need to connect pipes and wirings;
- Easy to transport by rail, road and ocean.

### Specification of Plate Ice Machine LIP-240C

Item		Specification	Unit
Power supply		380V/3P/50Hz	Voltage/Phase/Frequency
Refrigerant		R22/R404A	
Daily capacity		24000kg/day	
Cooling mode		Water-cooled	
Standard condition	Ambient temperature	35	°C
	Water inlet temperature	25	°C
Operating power	Compressor	50.2X2	kw
	Cooling tower fan	2.2	kw
	Cooling tower pump	5.5	kw

	Ice crusher device	2.6	kw
	Cooling water pump	2.8	kw
	Heated water pump	1.1	kw
	Average total	108	kw
	Total install power	125	kw
Compressor	Refrigeration capacity	103.5X2	kw
	Condensing temperate	38	°C
	Evaporating temperature	-20	°C
	COP.	2.06	kw/kw
	Horse power	60x2	HP
Cooling tower module size	Cooling tower size	ø2650x2645	(O.D.×H) (mm)
	Feed pipe size	1"	inch
	Cooling water pipe size	4"	inch
	Operating weight	1300	Kg
Container info	Size	12192x2438x2896	(L×W×H) (mm)
	Operating weight	13300	Kg
Parts info	Compressor	Bitzer, Germany	
	Expansion valve	ALCO, United States	
	Stop valve	DANFOSS, Denmark	
	Solenoid valve	DANFOSS, Denmark	
	Filter	ALCO, United States	
	Button/indicator	Schneider, France	
	Electrical	Schneider, France	
PLC	SIEMENS, Germany		